

Corrib Theatre presents  
**Kissing the Witch**

by **Emma Donoghue**

Directed by **Tracy Cameron Francis**



**June 9 – 22, 2022**  
**ASL Interpreted perf. June 19**  
**at Milagro Theatre**  
**[corribtheatre.org](http://corribtheatre.org)**

## CONTRIBUTORS:

Ronni Lacroute

Ellyn Bye, Bob & Janet Conklin, Harold Goldstein, Hugh & Mair Lewis, Charlotte Rubin, Maura Conlon-McIvor, Jessie Jonas, Leonard & Susan Magazine, Justine Nakase, Jan Baross, C. Maury Devine, Gabrielle Foulkes, Susan Jacobson, Karen Loewecke, Shelora Mangan, Sarah Quinn, Pat Scheans

Tim Birr, Marvin Dawson, Adam Liberman & Gemma Whelan, Suzanne Liberman, Joanne Mulcahy, Allen Nause, Pancho Savery, Sandy Schlechter

Terrence Dolan, Dick Hamlet, Larry Hansen, Mary Hurst, Thomas Kane, Patricia Perkins, Richard Lewis, Parag Shah, Ramsay Weit

Bill Bourque, Chris Coughlin, Brian Doherty, Holiday Johnson, Tom Kelly, Diane Kondrat, Kathleen Kuhn, Keith Lambert, Larry Lepaule, Ellen Margolis, Eileen McDermott, Vana O'Brien, Caroline Petrich, Ellen Pullen, Gary Taliaferro

Daniel Anderson, Marlene Andrejco, Teresa Baker, Laura Barton, Suzanne Berens, Brooke Budy, Dora Calhoun, Celia Carlson, Terry Carnahan, Caitie Coleman, Siobhan Collins, Patricia Demartini, Mandy Doherty, Patricia A. Flynn, Rachel Freed, Jim Fullan, Nancy Grengs, Valerie Hamilton, Karl Hanover, Andrea Hanson, Janet Hawkins, Suzanne Lagrande, Meg Larson, Elianne Lieberman, Shannon Llewellyn, Catha Loomis, Louise Martell, Elisabeth Mason-Khan, Nancy Matthews, Jody McCoy, Edward Mierjeski, Loretta Quigley, James Reavis, Leif Running, Scott Stephens, Deirdre Thieman

## SPECIAL THANKS:

Adam Liberman, Valerie Asbell, Dot Hearn, Oliver Pemberton

## ADDITIONAL PRODUCTION TEAM:

**House Manager:** Bronnie Rice

**Program:** Karl Hanover

**Cover Drawing:** Jan Baross

**Media Relations:** Karl Hanover

## CORRIB STAFF AND BOARD:

**Artistic Director:** Gemma Whelan

**Managing Director:** Karl Hanover

**Board of Directors:** Pancho Savery, Carmel Breathnach, Tracy Cameron Francis, Mary Hansen, Adam Liberman, Parag Shah, Gemma Whelan

**Resource Council:** Jan Baross, Claudia Dissel, Charlotte Headrick, Diana Hennessy, Matthew Spangler, George Thorn



**Donate to Corrib Theatre every time you shop!**

Link your Fred Meyer Rewards Card to Corrib Theatre at  
[www.fredmeyer.com/communityrewards](http://www.fredmeyer.com/communityrewards)

©2022 Corrib Theatre, a 501(c)(3) non-profit organization. All rights reserved.

Corrib Theatre, 3736 SE Salmon St, Portland OR 97214 503-389-0579



**corribtheatre**

**corribtheatre.org**  
**info@corribtheatre.org**

Corrib Theatre presents

# Kissing the Witch

by Emma Donoghue

Directed by Tracy Cameron Francis

## CAST

Ensemble ..... Nicole Marie Green\*  
Ensemble ..... Sara Hennessy\*  
Ensemble ..... Wynee Hu  
Ensemble ..... Cynthia Shur Petts

## CREATIVE TEAM

Stage / Production Manager ..... Sophina Flores  
Scenic / Props Designer ..... Kyra Sanford  
Costume Designer ..... Allison Normin Johnson  
Lighting Designer ..... Blanca Forzan  
Projections Designer ..... Alan Cline  
Sound Designer ..... Liz Young

Running time: 90 minutes, no intermission.

Presented in arrangement with IPR Ltd, London in  
association with Caroline Davidson Literary Agency, London

*Kissing the Witch* was first presented by Magic Theatre, San Francisco, in 2000

Show sponsored by Carol Streeter and Harold Goldstein  
Season sponsored by Ronni Lacroute

Additional funding through the generosity of Corrib donors and the following:



Advance Gender  
Equity in the Arts



Ard-Chonsalacht na hÉireann  
Consulate General of Ireland



Ita and Leonore Gershwins  
Philanthropic Fund



OREGON ARTS  
COMMISSION



Regional Arts &  
Culture Council



JAMES C. AND MARION L.  
MILLER  
FOUNDATION



Photos, video, or audio recording of this performance is prohibited.

Please feel free to take and share photos of the set before and after the show.

\*



Member of Actors' Equity Association, the Union of Professional Actors and Stage  
Managers in the United States, appearing under a Special Appearance Contract.



Member  
Theatre



## FROM THE PLAYWRIGHT: EMMA DONOGHUE

"I couldn't be happier that Corrib Theatre is bringing my revisionist fairy-tale play *Kissing the Witch* to life in Portland. Skewing traditional European magic stories, this show unpicks many knotty old lies about gender roles, family relations and love."

## ABOUT THE PLAYWRIGHT



Born in Dublin in 1969, Emma Donoghue is a writer of drama for stage, screen, and radio, as well as fiction short and long, contemporary and historical. Among her works for the stage are *I Know My Own Heart* (1993), *Ladies and Gentlemen* (1996), *Trespasses* (1997), *Kissing the Witch* (2000), *Don't Die Wondering* (2005), *Room* (2010), *The Talk of the Town* (2012), and

*Signatories* (2016). Her novels include *The Pull of the Stars*, *The Wonder* (her film adaptation is coming soon from Netflix, starring Florence Pugh) and *Room* (which she adapted into a play as well as a film nominated for four Academy Awards). Her new novel *Haven*, coming in August, is set on Skellig Michael around the year 600. [emmadonoghue.com](http://emmadonoghue.com)

## DIRECTOR'S NOTES: TRACY CAMERON FRANCIS



Growing up on fairy tales, whether through story books or Disney movies, "Once upon a time" leading to "happily ever after" is ingrained in us from childhood. These stories, told and retold for hundreds of years, have continued to cement patriarchal ideas and narratives into our culture and psyche. Women who have gone against the narratives mapped out for them have



### **Become a show sponsor!**

Your help enables us to continue to engage, inspire, entertain, and challenge audiences, and is greatly appreciated!

Email [gemma@corribtheatre.org](mailto:gemma@corribtheatre.org) or call 503-389-0579

constantly been othered with labels like “witch” put onto them by society. As the rights of women once again come under threat in this country, it is more important than ever for women to take control of their own narrative. In *Kissing the Witch*, these women reclaim their power to embrace their identities and tell their stories on their own terms.

## **ABOUT CORRIB THEATRE**

Corrib Theatre’s mission is to bring Irish playwrights’ unique perspective on oppression and empowerment, and conflict and resolution, to Portland in order to change our world for the better. We celebrate Ireland’s dramatic transformation in the recent decades of the 21st century and its emergence as a world leader in social and progressive arenas. Corrib Theatre engages, inspires, entertains, and challenges audiences with theatrical productions dealing with universal issues filtered through the Irish experience, with a focus on women, and lesser-known voices.

## **GOING OUT, STAYING IN, OR TAKING OFF... WE’VE GOT YOU COVERED.**

**HISTORIC 1926 MOVIE PALACE**



**PORTLAND'S INDEPENDENT VIDEO STORE**



**MICROCINEMA AT PORTLAND AIRPORT**



**HOLLYWOOD**  
THEATRE  
**MOVIE MADNESS**

4122 NE SANDY BLVD • (503) 493-1128 • [HOLLYWOODTHEATRE.ORG](http://HOLLYWOODTHEATRE.ORG)  
4320 SE BELMONT • (503) 234-4363 • [MOVIEMADNESS.ORG](http://MOVIEMADNESS.ORG)  
PDX INTERNATIONAL AIRPORT • CONCOURSE C



## **BIOS**



### **TRACY CAMERON FRANCIS**

#### **Director**

Tracy Cameron Francis has directed and developed work in New York at Atlantic Theatre Co, NYTW, HERE Arts Center, The Culture Project, NY Fringe Festival, Red Bull Theatre, Noor Theatre, NY Arab Comedy Festival, Manhattan Shakespeare Project, Pen World Voices Fest, The Center for Performance Research, Hudson Guild Theater, Lamama Culture Hub and others. Internationally at the Falaki Theatre (Egypt), Ubumuntu Festival (Rwanda) and LaMama Umbria ( Italy), and regionally with Milagro Theatre, Williamstown Theatre Festival, Corrib Theatre, and Artists Rep. She was a 2017 Theatre Communications Group Rising Leader of Color fellow, is a core member of Theatre Without Borders , a steering committee member for the Middle East and North African Theatre Makers Alliance, a member of the Lincoln Center Director's Lab, and an associate member of SDC. She currently serves as the Artistic Director of Boom Arts in Portland, Oregon. More info at [tracycameronfrancis.com](http://tracycameronfrancis.com)



### **NICOLE MARIE GREEN**

#### **Ensemble**

Nicole Marie Green (She/Her) is a New York native new to the Portland theatre scene moving recently from Kansas City, MO, where she received her masters degree in acting and directing from University of Missouri, Kansas City. Most recently Nicole was seen in *The Curious Incident of the Dog in the Night-Time* as the dance captain and Voice 1 at Portland Center Stage at the Armory. Other theatre credits include: Voice 1 in *Curious Incident*, Belle in *A Christmas Carol*, Lydia and Lady Catherine in Kate Hamill's *Pride and Prejudice*, Margot in *The Diary of Anne Frank* (Kansas City Repertory Theatre), Ruth in *Tribes* (Unicorn Theatre), Emilia and Time in *The Winter's Tale* (Heart of America Shakespeare Festival), Dorothy and The Wicked Witch in *The Wizard of Oz* (Meisner Puppet Theatre), Governess in *Turn of the Screw* (Spinning Tree Theatre), *Edward Tulane*, originating the role of Abigail Williams in *Afflicted: Daughters of Salem* (The Coterie Theatre)

among many more. Nicole is a proud member of Actor's Equity. For more information please visit [NicoleMarieGreen.com](http://NicoleMarieGreen.com)



## **SARA HENNESSY**

### **Ensemble**

Sara Hennessey (she/hers) is a two-time Los Angeles Drama Critics Circle Award winner and an L.A. Weekly Theatre Award nominee. This is her third show at Corrib after having been in *How to Keep an Alien* and *Little Gem* previously. She's been in several shows at Artists Rep (ART) including *1984*, *Everybody*, *Magellanica*, *Caught*, *Feathers and Teeth*, *The Skin of Our Teeth*, *Cuba Libre*, *Blithe Spirit*, *Intimate Apparel* and *Foxfinder*. During the pandemic, she worked on several ART Mercury projects including the *Magellanica* audio drama, and two workshop productions: *The Night We Won* by Yussef El Guindi and *Rudy*, a 5-part comic series about a small Oregon town. Before moving to Portland, she lived in Los Angeles, where she was a co-founder and Co-Artistic Director of the acclaimed Furious Theatre Company. In addition to doing many shows at Furious Theatre, Sara worked at the Pasadena Playhouse, A Noise Within, and Theatre@ Boston Court. In Chicago, she performed improv at the iO Theatre. She also made appearances on NBC's *Grimm* and the Netflix series *Trinkets*. She is a proud member of Actors' Equity Association and the Screen Actors Guild. [sarahennessey.com](http://sarahennessey.com)



## **WYNEE HU**

### **Ensemble**

Wynee Hu (she, her, hers) is excited to be returning to Corrib Theatre! Past credits: *Hurl* and *Eclipsed*. She was recently an understudy for *The Great Leap* co-produced by Portland Center Stage and Artists Repertory Theatre. She has also worked with Northwest Children's Theater, Bag&Baggage Productions, Boom Arts, Advance Gender Equity in the Arts (AGE), LineStorm Playwrights, PDX Playwrights, Speculative Drama, Oregon Adventure Theatre, and Exoplanetary Media. Wynee is an associate producer for *Lunchbox*, an independent film ([lunchboxthefilm.com](http://lunchboxthefilm.com)). She was an Emerging Artist in the 2021 Spring Cohort of Advance Gender Equity in the Arts' IGNITE program.

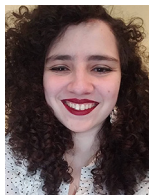


## **CYNTHIA SHUR PETTS**

### **Ensemble**

Cynthia Shur Petts (she/her) is an actor, writer, comedian, and teaching artist. She is happy to return to Corrib Theatre, where she previously played Rusty in *Hurl*. Other Portland credits include *A Midsummer*

*Night's Dream* (Anonymous Theatre) and a reading of Lisa Kron's solo piece *101 Humiliating Stories* (Profile Theatre). She worked for many years in Chicago storefront theatres, and has performed as a comedian and storyteller at clubs and bars all over Chicago, and at festivals around the country. Cynthia has taught workshops in writing and performing at local companies including Portland Center Stage, From the Ground UP, and PlayWrite, Inc. She is a staff member and company member with Third Rail Repertory Theatre.



## **SOPHINA FLORES**

### **Stage Manager / Production Manager**

Sophina Flores holds a BA in Theatre and Dance from Amherst College. She is the founder of local dance theatre company Roots and All Theatre Ensemble, centering marginalized identities and breaking the

boundaries of realism, who you may know from productions such as *Liminal* and *The Between Spaces*. She has Stage Managed for shows such as *Sweeney Todd*, *Urinetown*, *Big Love*, *Peer Gynt*, and *The Importance of Being Earnest*. Most recently she stage managed Milagro's *Duende de Lorca*. As a theatre maker, playwright, director, deviser, and choreographer, her work centers the intersectionality of identities as a bisexual Puerto Rican woman, and prominently features themes of mental illness and trauma, with surrealist or magical realist motifs.



## **KYRA SANFORD**

### **Set and Props Designer**

Kyra Sanford is a freelance scenic designer, props master, carpenter, and painter in the Portland area, working for theatres such as Milagro, PassinArt,



Theatre Vertigo, Defunkt Theatre, Profile Theatre, Portland State University, Clark College, Lincoln High School, Third Rail Rep, and various others. She received her BFA in scenic design from The Conservatory of Theatre Arts at Webster University.  
sanfordscenic.com



## BLANCA FORZAN

### Lighting Designer

Blanca Forzán is a lighting designer, set designer, and writer. Blanca has a degree in Architectures from Del Valle de Mexico University, was a Banff Center Intern (Canada), and worked with the National Institute of Fine Arts for over two decades (Mexico City). She is also a set designer, producer, manager, playwright, tour manager, and International technical director. Notable shows include *Faust* (Brooklyn Academy of Music, N.Y) and *Hamlet* (Cadiz Spain). Other credits, *Broken Promises*, *Contigo pan y Cebolla*, *El Muerto Vagabundo* and *Astucias* (Milagro), *Bicycle Country* (Aurora Theatre, Lawrenceville, G.A.) and *Octoroon*, *A Doll's House Part 2*, and *La Ruta* (Artist Repertory Theatre), *The Taming* (Coho Theatre), *In the Next Room* (Portland State University), *Men on Boats* (Willamette University, Salem), *Jump* (Confrontation Theatre), *Mother Courage* and *Ruined* (Imago Theatre) with Profile Theatre, *The Measure of Innocence* (Bag & Baggage, 2020), two participations in digital soliloquies as a writer with Bag & Baggage, one participation as an interpreter with the Mercury (digital) company (Artist Repertory Theatre), *A Bright New Boise* (Willamette University, 2021), *A Christmas Carol* (Portland Playhouse, 2021), *In the Name of Forgotten Women* (Coho Theatre, 2022), *Neat* with Passinart at IFCC, 2022, *Bella An American Tall Tale* (Portland Playhouse, 2022). Happy to be with you for the first time.



## Become a show sponsor!

Your help enables us to continue to engage, inspire, entertain, and challenge audiences, and is greatly appreciated!

Email [gemma@corribtheatre.org](mailto:gemma@corribtheatre.org) or call 503-389-0579



## **ELIZABETH YOUNG**

### **Sound Designer**

Elizabeth Young (Sound Design) is happy to be working on another Corrib production, particularly with such a female-focused production and design team. She has been involved in theatre behind the scenes, with sound designs for Corrib Theatre, CoHo Theatre, Theatre Vertigo, and Post5, and choreography and direction for Anonymous Theatre, and is a proud company member of Anonymous Theatre. She has also appeared onstage with many theatre companies around town and beyond, including most recently in *Don't Hug Me* at Broadway Rose Theatre Company. Much gratitude to Tracy and Gemma for the opportunity, and to Darius, Julian and Mark for ignoring the strange noises emanating from the study.



## **ALLISON NORMIN JOHNSON**

### **Costume Designer**

Allison Normin Johnson (she/her) is a designer and costumer who is delighted to be working in live theatre again. This is her first production with Corrib. She has worked in costume shops in Virginia, Arkansas, and locally at Portland Center Stage and Artists Repertory Theatre. Some of her favorite projects have been devised and emerging works with the CoHo Clown CoHort and Theatre 33, among others. Allison grew up in Beaverton and has returned to the area after earning her BA in Theatre Design from Willamette University. While earning her degree she spent considerable time studying art history in London, where her partner still lives. You can see more of her work on her website at [allisonjcreates.com](http://allisonjcreates.com)

## **ALAN CLINE**

### **Projections Designer**

Alan is a designer, programmer, and technician working in the Portland theatre community for the last ten years. His work has been seen at Artist's Repertory Theatre, Profile Theatre, Third Rail Repertory, Oregon Children's Theatre, BodyVox, Northwest Classical,

and others. He is very pleased to be making his first appearance with Corrib.



**GEMMA WHELAN**  
**Artistic Director**

Gemma Whelan is the founding artistic director of Corrib Theatre. For Corrib, she has directed numerous regional and U.S. premieres, including *James X*, *How to Keep an Alien*, *Four Last Things*, *Quietly*, *The Testament of Mary*, and *A Night in November* (Drammy nomination for Direction, Drammy award for Solo Performance). In Portland, she has also directed at Artists Repertory Theatre, Profile Theatre, CoHo Theatre, Boom Arts, and Portland Center Stage's JAW Festival. She was the founding artistic director of Wilde Irish Productions in the San Francisco Bay Area and directed at various theatres in the area for over 20 years. Gemma has taught at numerous colleges and conservatories in the Bay Area (including Mills College, American Conservatory Theatre, and Berkeley Repertory Theatre), and in Portland, Ireland, and Singapore. Her second novel will be published in spring 2022. She holds a BA in English, French, and Fine Arts from Trinity College Dublin, an MA in Theatre from UC Berkeley, and an MFA in Cinema from San Francisco State University.



**KARL HANOVER**  
**Managing Director**

Originally from Ireland, Karl moved to the U.S. in 1994 to pursue acting, and received his MFA degree from the National Theatre Conservatory in Denver. Theatres at which he has appeared include Calshakes, the Philadelphia Shakespeare Festival, Denver Center for the Performing Arts, Magic Theatre, Profile Theatre, and Portland Center Stage. In addition, he has voiced characters for the gaming industry, including those of Atlas and Fontaine in *Bioshock*, *Biochock 2* and *Bioshock Infinite: Burial as Sea*. As a theatre administrator he has worked in various capacities at Portland Playhouse, Profile Theatre, and Artists' Repertory Theatre.

# ***Be the first to know!***

---

## **Season Announcement 2022-23**

**We are very excited about our upcoming season.**

**Join our mailing list and be the first to know!**

**corribtheatre.org     503-389-0579**

---

---

## **Irish Theatre Tour 2023**

**Our 2022 tour is full but sign up on the Corrib Theatre Tour list so you'll be the first to get info on our 2023 tour!**

**Join our fifth annual Irish Theatre Tour, led by Corrib Theatre's Artistic Director Gemma Whelan and former Managing Director Adam Liberman.**

**Attend eight performances at world-renowned theatres in Dublin and Galway (during the Galway International Arts Festival). Meet with leading Irish playwrights and theatre artists. Day trips and other activities.**



### **Participant comments:**

**"Just a lovely and lively experience. I am so grateful for the opportunity."**

**"If you think you could plan a tour yourself and have anything close to the Corrib tour experience, you're wrong."**

**"What a great experience to learn about Irish theater, Irish culture and Irish history! Worth every moment."**

**"My favorite group trip ever..."**

**[corribtheatre.org/irish-theatre-tour](https://corribtheatre.org/irish-theatre-tour)**

